

# BRANCHINGOUT

LIVING BRANCHES

*Live & Grow – Together*

CELEBRATING A

100

*of* SERVICE





## FROM THE PRESIDENT'S DESK

# VISION. OPPORTUNITY. SERVICE.

## AT SOUDERTON MENNONITE HOMES THERE

is a historical wall that contains artifacts from the early 1900s. One of the items that receives a frequent chuckle is a framed list of rules which refers to residents as inmates. Yes, inmates. We smile and shake our heads because we can't imagine calling the persons who live within these walls inmates, but it was a different time. While we may use different language in 2017, the foundation on which the organization was built remains the same: a dedication to serving others.

When I reflect on the leaders who came before me, three themes stand out: vision, opportunity, and service. In the early 1900s there were no local retirement communities. Leaders in the Mennonite community wanted to find a way to care for the aging population in their congregations. They saw a need and collectively asked, "How can we care for our community?"

These men came together and decided to do something. They were forward-thinking visionaries who dreamed up the idea of a home for seniors and then made it happen. When nothing like it existed, they had opportunity to pave the way for senior care. There was great risk involved, but they stepped out in faith and saw "Eastern Mennonite Home of the Franconia District" open its doors in 1917.

Over the next 100 years the community grew. There were building projects, changes in leadership models, and updates to meet state and federal regulations. Yet one thing did not change: a dedication to service. And a reciprocity of service. The organization provided services to residents, but residents also served. One such example is the way residents picked apples from the orchard and made applesauce for residents and for the wider community. There was no kicking up your feet at Souderton Mennonite Homes, but instead a drive to continue to find connection and continue to serve one another, the wider community, and the world.

Souderton Mennonite Homes was born out of a belief that we as Christians and Mennonites should be of service to the persons around us. The core of care and service to others and those who are under-served was the genesis of this organization. And it is with great excitement that we celebrate this century of service and continue to build on this foundation as we empower older adults and families to lead lives of purpose and joy.

*Edward D. Brubaker*

EDWARD D. BRUBAKER  
President/CEO

## BRANCHING OUT

A PUBLICATION OF LIVING BRANCHES

*Together we empower older adults and families to lead lives of purpose and joy, guided by the Mennonite tradition of care and service to others.*

### EXECUTIVE LEADERSHIP TEAM

Edward D. Brubaker, NHA  
President/CEO  
Bruce L. Alder, MBA  
Chief Risk Officer  
Nancy M. Donnelly, MBA  
Executive Director, Dock Woods  
Alexandra K. Metricarti, MBA  
Chief Marketing and Public Relations Officer  
Steven D. Myers, MBA  
Chief Financial and Technology Officer  
Katherine S. Shott, MBA, NHA, SPHR  
Chief Human Resources Officer

### BOARD OF DIRECTORS

Kenneth J. Clemmer, Chair  
John W. Duerksen, Vice Chair  
L. Brent Kolb, Secretary  
James L. Rittenhouse, Treasurer  
J. Todd Alderfer, MD  
Willard C. Bergey  
Kenneth R. Burkholder  
Angela S. Hackman  
Bryan K. Hunsberger  
Amy Kolb  
Jane L. Ruth  
Sylvia F. Shelly  
Edward D. Brubaker, President

### EDITORIAL STAFF

Alexandra K. Metricarti, Editor-in-Chief  
Rebecca L. Kikendall, Managing Editor  
Donna F. Godshall, Staff Editor  
Leah A. Suleiman, Staff Editor

Contact Branching Out at 215-368-4438 or  
BranchingOut@LivingBranches.org

Living Branches maintains a mailing list of people who we feel are interested in the activities, events, programs, and services of our communities. If for any reason you want your name removed from this list, please email the editor with your name, address, and request at BranchingOut@LivingBranches.org

Living Branches is a member of:



## Table of Contents

### 4 A Century of Service

*Honoring the Roots of Tradition  
and Celebrating the Wings of Growth  
at Souderton Mennonite Homes*

### 11 A Taste of the Season

*Chow Chow – a traditional  
Pennsylvania Dutch recipe*

### 12 Dock Meadows Renovations

*North Wing lounge, hallway,  
and game room updates*

### 13 Souderton Mennonite Homes: 1917 – 2017

*Timeline of the 100 year history  
of Souderton Mennonite Homes*

### 20 Campus Happenings

*Clinical Competency Fair, Valentine's Celebration,  
and Documentary Screenings*

### 22 Legacy Giving Spotlight

*Annual Nursing Scholarship Fund Donation*

### 23 Living Branches Foundation Update

*Donations received from July 1, 2016  
through December 31, 2016*





# CELEBRATING A 100 Century of SERVICE

## HONORING THE ROOTS OF TRADITION AND CELEBRATING THE WINGS OF GROWTH AT SOUDERTON MENNONITE HOMES

By: Danielle Leheny

*When guests are given the welcome tour at Souderton Mennonite Homes, the upstairs lobby offers one of the most popular spots along the journey: a beautifully weathered 100-year-old brick wall that served as the original exterior of the home. Bruce Alder, Living Branches' Chief Risk Officer, has led the tour countless times, and he always enjoys the opportunity to gather guests around the wall to help them better understand the rich history of Souderton Mennonite Homes.*

### “THE WALL SHOWCASES A FANTASTIC DISPLAY OF HISTORICAL PHOTOS, AND

there's one photo in particular that I like to point out – it's a lovely shot of several residents from the 1920s gathering together on the original porch, which wrapped around the entryway,” said Bruce. “I tell our guests, ‘Do you see that brick wall behind the residents on the porch? That's where we're standing right now!’”

Much like Souderton Mennonite Homes' historical wall, the organization is proudly standing in the same fundamental place where it first planted its seeds 100 years ago. Even though the exterior, capacity, and capabilities has been enhanced greatly over the past century, the heart and mission of Souderton Mennonite Homes has remained the same: to offer residents a home where they can live and grow together – strengthened by timeless values, spirituality, and community bonds.

“The people who keep us pure to who we really are and what we really need to be are our residents,” said Margaret Zook, the Souderton Mennonite Homes Administrator from 1993 to 2008. “They come here because they find kindred souls who are searching for each other – as well as a place where they can be connected.”

That beautiful connection unites not only residents and staff in the present day, but also the many committed individuals who have loved and nurtured the heart of this home over the past 100 years. We invite you to join us on a tour through the unique history of Souderton Mennonite Homes for a closer look at the roots where our values live, the dedication of many that has given our vision wings to grow, and the continuity that connects our past, present, and future.

### ROOTED IN SERVICE: THE EARLY YEARS

The Franconia Conference Mennonites have always been conscious of the needs of the poor among the brotherhood and the wider community. In the 1890s, Deacon Henry C. Krupp helped pay for the rent, food, medical, and funeral costs for the poor, and if the Almsfund needed replenishment before the next communion, he simply borrowed money from church members, who willingly supported those in need. Within families, a bone-deep sense of love and responsibility ensured that grandparents and

parents were cared for by the younger generation – but this often meant that the sick or elderly lived out their days confined to a bed, without easy access to proper care.

Progressive Mennonite businessmen noticed how other churches were beginning to care for their needy and aging members in a more cohesive way. William M. Moyer, a Philadelphia marketer and dynamic fundraiser, first introduced the idea of the conference's first “Old Peoples' Home” to Bishop Henry R. Rosenberger and Bishop Andrew S. Mack, conference moderator. The idea was met with some resistance, but on October 7, 1914, the bishops appointed an investigating committee to explore church-affiliated retirement homes in Lancaster county and to report back with recommendations – so that the value of new ideas could be measured against the strain they put on the fabric of faith and tradition. What was to be new must serve what endures.

On October 7, 1915, the conference approved the project and appointed 12 trustees – who understood that they would not be creating an institution, but rather, a home embraced by the church. The conference looked to its congregation to help support the project financially, and the goal of \$6,000 was surpassed as the trustees and congressional committees collected over \$19,000.

The trustees selected a building site on the summit overlooking Souderton – located less than two blocks from the trolley stop – and building began in 1916. Architect Horace Trumbauer – whose son and grandson would also support the growth of Souderton Mennonite Homes – designed a splendid three-story, 50-room building with a welcoming front porch and shuttered windows along the full length of the home.

The “Eastern Mennonite Home of the Franconia District” quietly opened its doors to the public on Ascension Day, Thursday, May 17, 1917. At the time, twenty “dependent” applications had already been submitted. The staff, who all lived on site, were largely young, single women who received room and board as part of their pay. The board's first “steward and matron” – a leadership model that would serve the organization well until 1993 – were Souderton store clerk Alpheus K. Allebach and his wife Margaret Cassel Allebach. They welcomed their father Christian B. Allebach as the first “inmate” at the rate of \$5.50 per week. Christian,







a minister in Towamencin since 1876, delivered the first sermon on May 20.

Donation boxes at the four outside doors encouraged generosity – and personal notes and collections soon covered the original building costs of over \$33,000!

After two years, Daniel L. and Mary Ann Detweiler Gehman took over as steward and matron – and oversaw various enhancements, including the addition of a much-needed elevator. They hosted special events with the community – and barnyard sounds and floating cherry blossoms along dusty Summit Street greeted young folks as they arrived. All community members were encouraged to participate in monthly Saturday night song services.

The lingering effects of World War I hit the home hard, but the community banded together to provide support. Donations of a vacuum cleaning system,

clothing from sewing circles, and a “Ford machine” donated by trustee Garret S. Nice kept the home running smoothly and economically. When crowded conditions were noticed by the Mission Board during their monthly meeting at the Home, they initiated a building fund to expand. The 1923 annex, which cost over \$50,000, provided a new kitchen, a 200-seat chapel, and “hospital rooms” – allowing the home to increase capacity to 80 residents.

Due in part to the challenges of the early years, the home saw five stewards in ten years. In addition to the Allebachs and the Gehmans, leaders included Solomon Good from 1922 to 1923, John and Katherine Leatherman Gahman from Deep Run congregation for less than a year in 1923, and Frank G. and Mary Moyer from 1923 to 1927. In 1927, the home would begin a long period of administrative stability by welcoming steward and matron Jacob and Lizzie Moyer Landis to the family.

## AN EXPANDING HOME – A GROWING VISION: 1927-1993

Much like a tree with strong roots and a steady trunk, the Eastern Mennonite Home thrived under the loving care of Jacob and Lizzie Landis. Lizzie, tall and soft-spoken, started her day at 4:30 a.m. overseeing housekeeping, feeding hungry, homeless folk, and scrubbing pots and pans. Her days were long, and her energy and insights limitless. Formerly a farmer and car salesman, Jacob realized new strengths and abilities in his new job, and his quiet spirituality helped both residents and staff through the hardships of recession.

Supporting 80 residents required regimented organization, and both staff and residents alike worked together to run the home. Huge clothing lines were hung in the garden; the apple orchard behind the garage produced a bountiful harvest – making apple sauce a traditional staple of the Eastern Mennonite diet – and all women helped with duties like canning a wide range of fruits and vegetables grown on-site.

In 1952, Jacob and Lizzie celebrated 25 years of service to the home, as well as their 50th wedding anniversary and Lizzie’s 70th birthday. Shortly before that, Curtis and Martha Alderfer Mininger had joined the home to apprentice with Jacob and Lizzie. It was at mealtime one day in May 1952 when Jacob and Curtis quietly stood up and exchanged seats – signaling the change in leadership. Jacob and Lizzie remained on-site as assistants, and like a mother to her children, the devoted Lizzie continued into her 90s to tuck residents into bed with kisses and prayers before slipping into her own bed. Her 100th birthday was celebrated with her “family” of 55 years, shortly before her memorial service in 1982.

Curtis and Martha were cut from the same cloth as Jacob and Lizzie – and served residents faithfully, with little expectation of reward. Curtis gently handled everything from bedside issues to mechanical breakdowns. Residents depended on him to repair eye glasses, hearing aids, and recorders. The apple orchard, grapevines, and gardens flourished under his touch. Martha purchased the home’s food and household supplies and joined Curtis on bedside visits. Rates were kept down to accommodate the poor and the homeless – and the waiting list grew.

The expanding home strained the state of its nursing care. The second-floor medicine room was no more than a closet, and the nurses worked in pairs on tiring, 12-hour shifts. Thanks to generous donations, construction of a new wing began in 1964. The addition extended back between the kitchen and chapel and included 18 new beds for non-ambulatory patients and a new nursing station. The enhanced level of care meant adjustments for the staff, including new dietary considerations, and the team worked



## THE LEGACY OF “HOME”

When Souderton Mennonite Homes first opened its doors in 1917, it was simply called “The Home” – and for many, it was. The Home was built as a reflection of God’s love – to serve as a place where that love could be more easily extended to all members of the community through a tradition of mutual care and support.

Today – in the world of many choices for senior living – for some, the phrase “the home” has taken on quite the opposite meaning, and may evoke impressions of a place that is impersonal or clinical. However, every day, Souderton Mennonite Homes is happy to challenge this modern connotation – and stands by a firm belief that “home” is one of the most lovely and peaceful words there is.

“A home is where we feel sense of safety and identity,” said Margaret Zook, former administrator. “Through all of our growth, these are the things that we make sure are still available to our residents. Just as we did 100 years ago, we can still say today, ‘We are here for you – and this is your home, a place to be connected to each other and to God’s love.’”

Even though the staff no longer lives on-site as they once did, a deeply-rooted sense of family and care ensures that home is not just a tangible place, but also a feeling of togetherness and support.

“We work in the residents’ home – they don’t live where we work,” said Margaret. “And what we love the most about this home is who we share it with! Every member of our family brings unique gifts that enhance the strength of who we are – and contribute to the enduring beauty of our home.”



together to improve all aspects of service.

By the late 60s, the home – now supporting 100 residents – continued to feel the pressures of growth. In 1968, a proposal was accepted to build cottages in front of the garage. Samuel and Grace Hackman financed the first retirement cottage in exchange for lifetime living rights. Even as the number of residents grew, a strong sense of togetherness remained, and staff and residents alike worked side-by-side on the daily upkeep of the community.

“I got room and board and \$55 a month. It took a little while until I got rich!” once laughed Ruth Nice during an interview in 2002 for a commemorative video about Souderton Mennonite Homes’ history. She had come to work in 1953 and lived there until her death in 2011.

“People spent best years of lives here and then could live out their lives here too,” said John L. Ruth, Mennonite historian and author. “It was a culture where everybody didn’t have to succeed, be impressive, or have a major role. A service role was accepted – and respected.”

After 25 years of service, Curtis and Martha were succeeded by Paul D. and Esther Alderfer Moyer

of the Souderton congregation in 1978 – and they were the first administrators to retain their home residence. Curtis and Martha joined the other residents and continued to contribute greatly to the running of the home.

The combination of Paul’s strong vision to enhance care for the whole individual and the need to meet the demands of increasingly strict insurance and government regulations made it a necessity to continue expanding and modernizing Souderton Mennonite Homes – but getting things moving in a 60-year-old institution with long-held traditions created challenges.

“When we came here, there wasn’t fan in the place!” said Paul, who is currently a resident at Souderton Mennonite Homes with Esther. “It’s hard to imagine what it was like – especially on the third floor where it was very hot – and yet the people were happy.”

Between 1976 and 1980, the building program expanded, and five four-plex cottages were built on Menno Home Drive. At the same time, the original 18-bed infirmary expanded to a 59-bed skilled nursing area. With the expansion, the board had made a leap of faith, because only half of the units were sold before digging began. However, fears were



*“...the apple tree is a constant reminder of the cherished roots that have supported – and will continue to support – every member of the Souderton Mennonite Homes family.”*

quickly quieted, as all residences filled soon after completion.

“Somehow or another, word got out that there was good care given here, and that got people to come,” said Paul. “It amazed me that people came from all over!”

By 1981, apartments were located where apple trees once provided fruit. The apartment lounges, recreational rooms, and the large dining room now created an atmosphere for friendship, health and caring. By 1984, residents could enjoy their brightly refurbished, air-conditioned rooms, or relax in the new Colonial Avenue entrance lobby, or browse in the large gift shop. The renovated chapel was also ready – and despite an increasingly diverse population, the importance of worship remained a cornerstone of life.

“They had singing before all the meals; they had prayers before all the meals – everyone entered into the spirituality of the place,” said Paul.

On October 1, 1985, Eastern Mennonite Home’s name was officially changed to “Souderton Mennonite Homes” – a strong affirmation of the enduring importance of “Home” in the organization’s mission. In 1987, the community celebrated its 70th anniversary. That same year, Curtis

Mininger passed away suddenly, concluding his 36 years of dedicated service to the residents and staff.

Paul recalled one of his favorite conversations with Curtis, which took place shortly before he passed: “Curtis was laying in the hospital bed and said to me, ‘I was just thinking about how long Jacob and Lizzie served as steward and matron – for 25 years.’ So, I said, ‘Yes, and how long were you steward?’ To which he replied, ‘Oh, well...27 years.’”

#### EXTENDING CARE – DEEPENING UNITY: THE LAST QUARTER CENTURY

In 1993, Souderton Mennonite Homes welcomed Margaret Zook, who became the first sole administrator, as well as the first female leader, for the organization. Margaret grew up fully understanding the heart of the home, as her father’s ministry work often led him – with a very young Margaret in tow – to visit with the residents. Before assuming her role as administrator, Margaret was closely mentored by Paul and Esther Moyer.

Under Margaret’s leadership, Souderton Mennonite Homes continued to expand – through the support of experienced professionals and a strong connection to the church

– both of which have been essential to the organization’s growth. In 1995, Park View memory care – the first such specialized care unit in this area – opened with 22 beds. Years later, the impressive 2001 expansion, completed in 2003, saw the renovations of all Personal Care rooms, the addition of the Summit View Auditorium and a welcoming community space, and the opening of the award-winning Elizabeth’s Garden, which continues to delight residents and visitors alike.

In 2008, Souderton Mennonite Homes joined with Dock Woods and Dock Meadows to form Living Branches – one of the first retirement community affiliations happening in the region.

“We came together with one board and one shared vision, but each campus retains its own unique identity – enabling both choice and diversity for our residents,” said Edward D. Brubaker, President/CEO.

Through all of the growth and transition, there remains a beautiful reflection of God’s love at the heart of Souderton Mennonite Homes.

“We are indeed still a home,” said Margaret in the 2002 commemorative video. “We provide for the people that come here and want a home within a home – and a family within a family.”

## FROM QUIET GATHERINGS TO SOCIAL EVENTS – 100 YEARS OF MEALS AND TOGETHERNESS

Almost every person interviewed about life at Souderton Mennonite Homes in its early days will mention the traditional silence that accompanied every meal. Meals were a time to quietly reflect upon the blessings of life and of being together – and the lulling sounds of silverware clinking against plates and bowls served as the only backdrop for individual reflection.

The kitchen was the heart of the home, and daily food preparation was a great unifier – and gave both staff and residents ample

opportunities to work together.

While mealtime has certainly changed in the last century at Souderton Mennonite Homes, the importance of togetherness has remained; it just sounds a lot different! Anyone who has walked through the buzzing dining room or the Apple Orchard Café at mealtime can tell you that the silence of days’ past has been replaced with the cheerful sounds of chatter and laughter. And while residents are no longer involved in the daily food preparation, the ever-expanding calendar of events and activities

ensures that opportunities for conversation and togetherness are easy to find.

“Just as our historical tradition of reflective silence at mealtime was meant to honor the love residents had for each other and for God, the chatter and laughter of today serve that very same purpose,” said Edward D. Brubaker, President/CEO. “We are blessed to enjoy good food, good times, and good friends – as well as traditions both new and old – that bring us together each and every day.”





#### A LEGACY TO CELEBRATE

At the center of the Souderton Mennonite Homes lobby stands a beautiful replica of an apple tree, with leaves so realistic you want to reach up and touch them. Just as the original exterior brick wall captivates visitors with its connection to history, the tree also represents the beauty of a century of lasting traditions forged by the staff and residents of Souderton Mennonite Homes. From the sweet taste of applesauce, which remains a favorite treat among residents, to the timeless gifts of worship, community, and togetherness, the apple tree is a constant reminder of the cherished roots that have supported – and will continue to support – every member of the Souderton Mennonite Homes family.

“Just as I absorbed the history of this place coming in the front door as a child from those who lived here,

we need to explain to our newest family members that while our exterior does – and out of necessity **MUST** – change, what lives at our heart remains the same,” said Margaret.

Like the lasting beauty and strength of the historical brick wall that welcomes visitors, the core of Souderton Mennonite Homes has been built by many to endure. Our cherished traditions and roots – and a loving and dedicated team always seeking to enhance lives – will ensure that Souderton Mennonite Homes will always be, quite simply, a place that people can make their home.



# Chow Chow

*A traditional Pennsylvania Dutch recipe*

YIELDS: 5 QUARTS, APPROXIMATELY

## CHOW CHOW

1 quart cucumbers, diced	1 pint red peppers
1 quart string beans	1 cup small onions
1 quart lima beans	1 tablespoon dry mustard
1 quart corn	2 cups sugar
1 pint celery	1 quart vinegar
1 pint green peppers	

## INSTRUCTIONS

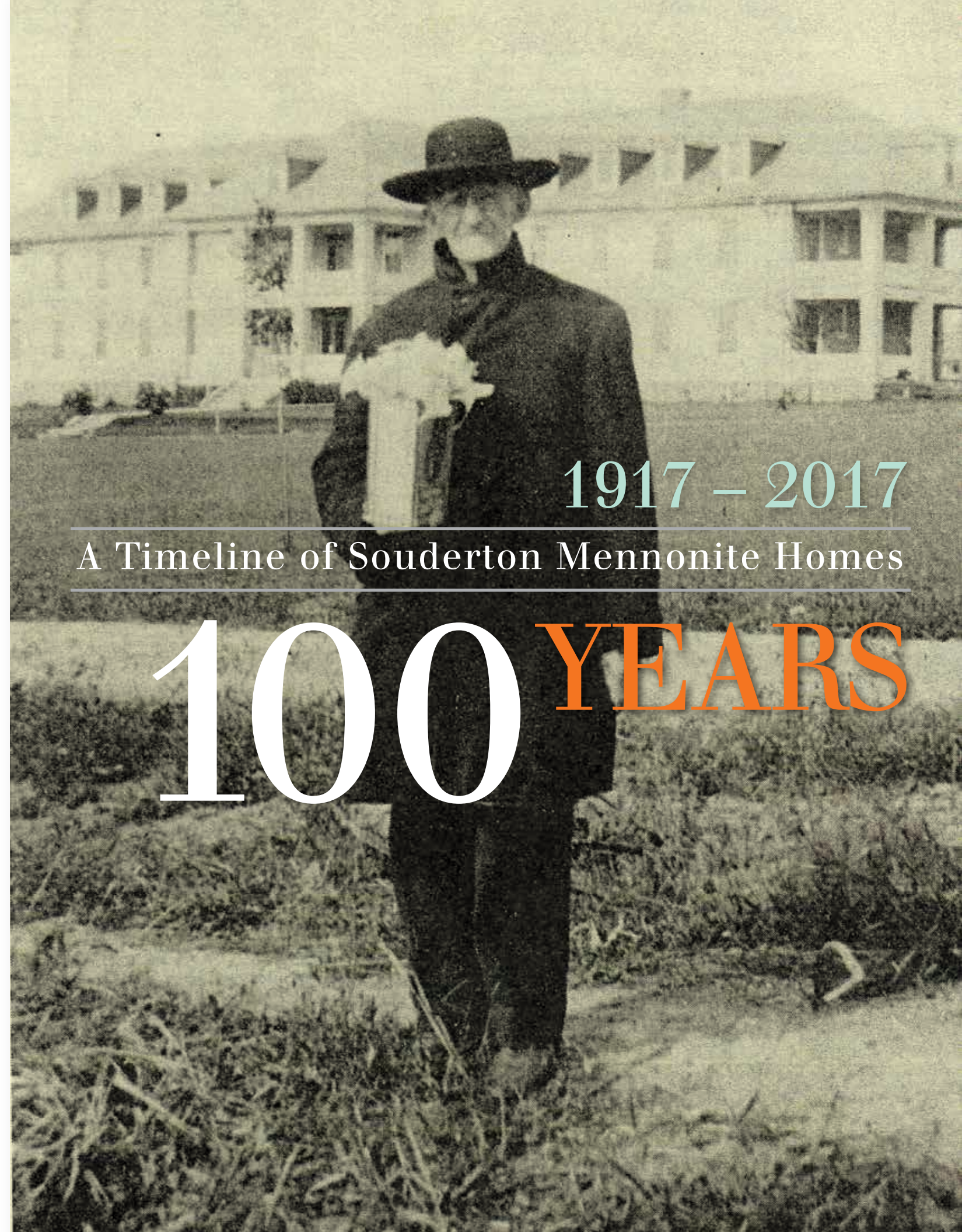
1. Chop vegetables the desired size
2. Cook separately until tender, not soft
3. Drain cook vegetables and mix together
4. Combine sugar, mustard, and vinegar
5. Bring to boil
6. Add mixed vegetables to hot liquid and bring to a boiling point
7. Put into hot jars and seal.





## Dock Meadows Renovations

The renovations at Dock Meadows continued this winter in the north wing. The renovation included new wall coverings, carpet, paint, light fixtures, and furniture. Additionally, a lounge which was previously used for chapel services has now been renovated to a game room with a pool table and game tables. New chairs were purchased so that chapel services could take place in the activity room which is centrally located and more convenient for all residents. We want to thank the residents and staff at Dock Meadows for their patience and cooperation during the renovation. All are welcome to stop by and see the updates!



1917 – 2017

A Timeline of Souderton Mennonite Homes

100 YEARS





1917

Eastern Mennonite Home of the Franconia District officially opens in 1917 on Ascension Day. The building had fifty rooms.



1917-1919 – Alpheus K. and Margaret Cassel Allebach served as the first steward and matron.



1917 – Christian B. Allebach was the first resident. He paid \$3.50 a week.

1917



1919-1922

Daniel and Mary Anne Detweiler Gehman served as the second steward and matron.



1923

1923 – John and Katherine Gahman, the third steward and matron, pictured celebrating John's birthday with family.



1923

1923 – The first expansion cost \$50,000 and included a new kitchen, 200-seat chapel, and the annex which increased the home's capacity to 80.



1927

1927 – Frank G. and Mary Moyer served as steward and matron from 1923-1927. Jacob and Lizzie Moyer, pictured, served as steward and matron from 1927-1952.



1951

Marvin M. Anders becomes the first official minister.

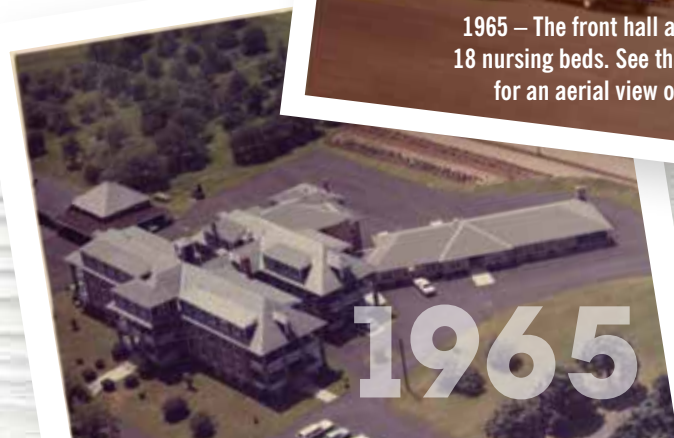


1952

1952 – Curtis and Martha Alderfer Mininger left their farm in Hatfield to apprentice with Jacob and Lizzie Moyer. In May, Jacob and Curtis quietly exchanged seats at mealtime to signify the change in leadership. Curtis and Martha served as steward and matron from 1952-1978.



1965 – The front hall addition added 18 nursing beds. See the photo below for an aerial view of the addition.



1965



1968 – The first retirement cottage was built.

1968



1970s

1970s – Marion Landis developed the Auxiliary.





1976

1976 – Paul D. and Esther Alderfer Moyer joined the Mininger administration. In 1978 Paul became administrator and Esther became assistant administration. They were the first administrators of the home and the first couple to live off-campus. Curtis and Martha Mininger remained by serving in maintenance and the kitchen and laundry.

1976-1980 – Five four-plex cottages were built on Menno Home Drive and the original 18-bed skilled nursing unit was expanded to 59 beds.



1981

1981 - The first apartment building, consisting of 23 apartments, was constructed at the site of the original apple orchard.

1983 – The first bus was purchased for resident use.



1983

1985

1985 – On October 1, Eastern Mennonite Home was officially renamed Souderton Mennonite Homes.



1993 – The third apartment building was constructed, adding 73 apartments. Additionally, six cottages with attached garages were built along Menno Home Drive.



1987 — The second apartment building was constructed, adding 36 apartments.

1987



1993



1993

1993 – Margaret Zook served as administrator and executive director of Souderton Mennonite Homes from 1993 to 2008.



# 1995



1995 – Park View, the memory care area at Souderton Mennonite Homes and first of its kind in the area, was constructed.

1999 – 40 villas were constructed along Green St and Cowpath Road.



## 1999



# 2001-2003



2001-2003 – Community space was added, including the Summit View Auditorium. Personal Care rooms were also renovated.



Ed Brubaker

2008 – Souderton Mennonite Homes and Dock Woods Community, Inc. affiliate to form Living Branches. Edward D. Brubaker served as interim executive director.



## 2008

LIVING BRANCHES



2009-2014 – Brent Nafziger served as executive director.



## 2010

2010 – Elizabeth's Garden was created in memory of longtime resident, Elizabeth Longacre.

2012 – Renovations in the health care area allowed for the addition of 10 nursing beds, for a total of 71.



## 2012



2015-2016 – J. David Shenk served as executive director.

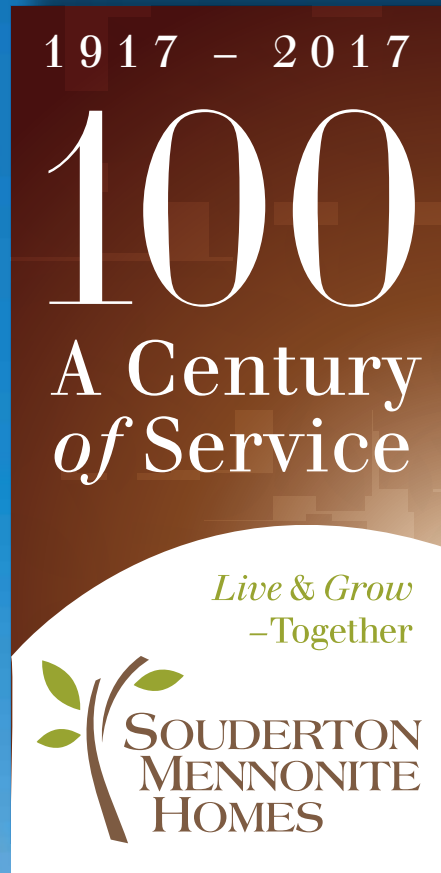
## 2016

2016 – Renovations are currently underway to the community spaces and master planning for the future has begun.





our next century begins...





## FLIK RECIPE CONTEST (1)

Each year a theme is introduced by FLIK Lifestyles, the dining management company, for special meals in the dining room at Dock Woods. The 2017 promotion is called Heirloom: From My Family to Yours and features residents sharing their favorite family recipes and the stories behind them. Residents from all FLIK Lifestyles communities were invited to submit recipes and we are proud to say that Margie Briggs and her “Audrey Cake” recipe were selected as one of the winning entries! Margie was interviewed by FLIK and was photographed for various promotional materials that will be distributed at all FLIK communities. Congratulations Margie!

## CLINICAL COMPETENCY FAIR (2)

Living Branches had its first Clinical Competency Fair over the course of four days in February. Over 100 clinical staff persons attended the fair and received education and hands on practice performing various nursing skills such as proper hand washing, wound care, and administering IV medication. The fair was a collaboration between the Health Care and Personal Care areas at all three campuses and the physical therapy and infection control departments. This will be an annual event to provide our nursing staff the opportunity to review and update their practices, ensuring that residents receive consistent, excellent care.

## VALENTINE'S CELEBRATION (3)

The 42<sup>ND</sup> annual valentine celebration was the kickoff event for the 100<sup>TH</sup> anniversary celebration at Souderton Mennonite Homes. Entertainment was provided by Emulate Chamber Ensemble from Eastern Mennonite University. The highlight of the event was when Emulate sang a song specifically commissioned for Souderton Mennonite Homes. As always, a huge thank you to Gordon and Velda Beidler for their generous donations which make the event possible. This evening is always a highlight of the winter for residents and staff!



## ALIVE INSIDE SCREENINGS (4)

The Dementia Care Strategy initiative was announced in November and officially began in February with screenings of ALIVE INSIDE, a life changing documentary that won the 2014 Sundance Film Festival Audience Award. The film documents the magical role that music can play for persons experiencing memory loss. Persons are awakened when headphones are placed over their ears and they're given an iPod filled with their favorite music. Over 300 residents, staff, family members, and persons from the community were able to attend and were greatly impacted by the film. Kathleen Roberts, director of dementia care strategy, announced that the Music & Memory program, which is modeled in the film, will begin at Living Branches this spring. For more information, contact Kathleen at [Kathleen.Roberts@livingbranches.org](mailto:Kathleen.Roberts@livingbranches.org).





# Legacy Giving Spotlight

By: Danielle Leheny



## ANNUAL NURSING SCHOLARSHIP COMMEMORATES THE LIFE AND LEGACY OF LERA SALMON

Tony Salmon’s first meeting his wife Lera may have been a blind date, but his eyes were always wide open when it came to seeing exactly how wonderful she was – on that first date and through 66 years of marriage. Every day, he witnessed her love of life, particularly her excitement of exploring new places, and the pair spent many years travelling the world together. Tony saw her become a loving mother – and later, a wonderful grandmother – to their three children and eight grandchildren. Throughout her life, Lera greatly enjoyed people, and it never failed to make Tony smile to see people warm to his wife so quickly and easily.

The staff at Country Cottage, where Lera moved after her dementia progressed, also remembers Lera’s easy charm and friendliness. Tony and Lera had moved to the Dock Woods community in 2004, and because Lera’s own mother had suffered from dementia many years ago, it was important to Tony and Lera to find a community that could provide loving, supportive care as their needs changed.

When Lera passed away in 2016, Tony sought a way to commemorate her life, so that others could see – and live – the beauty of her legacy. Because Tony felt that Lera’s care at Country Cottage was stellar, he chose to institute an annual

donation toward a nursing scholarship for a member of the Living Branches staff.

“Everyone was always very pleasant and positive with us,” said Tony. “They liked Lera very much – that was easy to see – and they took the time to keep me updated. All of the little things they did made a huge difference. For example, Lera was very particular about her appearance, and her team made sure that she always looked lovely, from applying her favorite color lipstick to styling her hair just as she liked.”

From his regular interactions with the Lera’s care team, Tony knew that the scholarship would make a difference in helping the staff advance their skills, which in turn, would enable them to continue to serve and enhance care for residents like Lera.

“This scholarship is definitely a way to say ‘thank you,’ because I know the young folks here are trying to build a future by going back to school,” said Tony. “And in doing that, I can also ensure that Lera’s memory will forever be connected to some of those bright futures.”

The first nursing scholarship was awarded in 2016 to Lori Sell, a Licensed Practical Nurse (LPN) who had been part of Lera’s care team. Lori is

currently pursuing an associate’s degree at Excelsior College – a professional stepping stone that will help her become a Registered Nurse (RN).

“I took care of my parents when they were ill – a part of my life that greatly influenced my career path – and when I came to Dock Woods, I knew right away it was the right place to pursue my dream,” said Lori.

The scholarship came through for Lori at exactly the time she needed it the most. In mid-2016, Lori had decided to suspend her college courses in the fall due to financial reasons, and she was saddened by the necessity of putting her dreams on hold. But thanks to the new scholarship, Lori can keep her momentum going, and she’s aiming to wrap up her degree in June 2017.

“I can’t even describe how much of a blessing this has been for me,” said Lori. “It came along at exactly the right time, and I am so grateful to both Tony and Lera for this opportunity.”

Tony, who can still recall the sparkle of his first date with Lera, knows better than anybody the beauty of blessings that come along at exactly the right time. And thanks to his generosity – and Lera’s precious memory – the new nursing scholarship will continue to make an important difference to the dreams and growth of the Living Branches team.

# Charitable Donations to the Living Branches Foundation

JULY 1, 2016 THROUGH DECEMBER 31, 2016

### *Gifts to the Souderton Mennonite Homes Agape Fund*

Eva Alderfer  
Gladys Alderfer  
Marvin and Grace Anders  
Cynthia Bartus  
Rita Bixler  
Ivy Budd  
William and Jeanette Bunney  
David and Geraldine Cassel  
Edith Clemens  
Michael and Sharon Curry  
Mark and Carolyn Derstine  
Keith and Pamela Derstine  
Anna R. Detweiler  
Howard Freed  
Harvey and Grace Freed  
William and Anna Freed  
Jeane Fretz  
Harley and Anna Gehman  
Karl and Patti Godschall  
Margaret Godschall  
Anna Mary Godshall  
Grace Mennonite Church  
Doris Hallman  
Nancy Hawkins  
Gerald and Gloria Heckler  
Huff & Lakjer Funeral Home  
Mark and Jean Kolb  
Floyd and Debra Kratz  
Wilbur and Marilyn Kriebel  
John and Betty Kulp  
Elizabeth Kulp  
Clayton Landis  
Grace Leatherman  
George Lynch  
The Estate of Ruth Marczuk  
David and Joanne McCrork  
Ralph and Sadie Moyer  
Ruth Ann Moyer  
Shirley Moyer  
Ralph and Sadie Moyer  
Esther S. Moyer  
Vesta Moyer

The Estate of D. Laraine Moyer  
Stanley and Gloria Moyer  
Betty Murray  
Rachel Myers  
North Penn United Way  
Samuel and Gladys Nyce  
Jean O'Donnell  
Thomas and Zoe Passerini  
Plains Mennonite Church  
Karen Potts  
Grace Rickert-Moyer  
Shirley Rittenhouse  
Norman and Alice Rittenhouse  
Souderton Mennonite Homes  
Auxiliary  
Shirley Texter  
Doris Texter  
Towamencin Mennonite Church  
Raymond and Linda Trauger  
Willard and Ruth Tyson  
Brenda Winn  
Evelyn Wismer  
Clyde and Gladys Yoder  
N. Glenn and Alta Yoder

### *Gifts to the Dock Village Youth Fund*

Russ and Rhoda Bishop  
Richard and Susan Bishop  
Jean Bleil  
Ethel Blumberg  
Frederick Bookheimer  
Edward and Lucy Brubaker  
J. Stanley Davis  
Rita DiLucia  
Dock Woods Spiritual Life Committee  
Ralph and Carol Folcarelli  
Ruby Friedland  
Pearl Fulmer  
Mary Kehs  
Elizabeth Kinzie  
Jeffrey Landis and Sharon Fransen  
Francis and Mary Loughran  
June Murphy  
Doris Nelson

Shirlee Nicolino  
Allen and Tina Pannell  
Barbara Rafter  
Alice Rau  
Erickson and Kathryn Reger  
Mary Ann Reidy  
Roy Rittenhouse  
Donald and Joan Robinson  
Henry and Charlotte Rosenberger  
Thomas and Loretta Slattery  
Wayne Waters  
Edith Wetherill

### *Gifts to the Elizabeth’s Garden Fund*

Daryl and Carol Clemmer

### *Gifts to the Retired Church Workers Housing Fund*

Noah and Sarah Kolb

### *Gifts to the Nursing Scholarship Fund*

Anthony Salmon

### *Gifts to the Living Branches Benevolent Care Fund*

Abdelsalam Corporation, dba  
Linli Jewelry  
Myung Ock and Sae Hwan Ahn  
Bruce and Deborah Alder  
Ferne D. Alderfer  
Harold and Ferne Alderfer  
Cindy Alderfer  
Alderfer Glass Company  
Margaret Allen  
The Benevity Community  
Impact Fund  
The Estate of Sarah Benischeck  
The Estate of Grace S. Bergey  
Russ and Rhoda Bishop  
Jean Bleil  
Laura Braxton  
Grace Brenneman

Edward and Lucy Brubaker  
Kenneth and Karen Burkholder  
Leonard and Rhoda Byler  
Edwin and Ethel Castor  
Clair and Arlayne Clemens  
Vernon and Grace Clemmer  
Kenneth and Gayle Clemmer  
Contract Pharmacy Services, Inc.  
Oda Coseo  
Deborah K. Dayton  
John Dearden  
Clair and Rosalie Derstine  
Willard and Lillie Derstine  
Ivan and Lorene Derstine  
Detweiler Construction, Inc.  
Rita DiLucia  
Charlotte Dimmig  
Nancy and Thomas Donnelly  
Arline Donohue  
Eden Bridge Foundation  
Dave and Kim Fischer  
FLIK Lifestyles  
T. Dale and Anna Frederick  
Lois Fretz  
William and Sarabeth Gadd  
Arlene Gehman  
Ruth Gentile  
Ted Gody  
Sadie Grass  
Betty M. Hackman  
Daryl and Barbara Hackman  
Elaine Hager  
Raymond and Janet Harrison  
Norman and Judith Hartzel  
Keith and Betsy Heavener  
David and Sandra Hersh  
Ruth Hertzler  
William and Mary Anne Hildebrand  
Ron and Joanne Hostetter  
Stanley and Elaine Houpt  
Ray and Brenda Hurst  
Francis and Elva J. Keenan  
Stafford and Jean Keer  
Mary Kehs  
Shirley Keller





The Estate of Suzanne Kevis  
Betty Kinzie  
Robert and Betty Kratz  
Vernon and Elizabeth Kratz  
The Estate of Isaiah K. Krupp  
William and Florence Kuhfuss  
Geraldine LaBarbera  
Gregory and Ellen Lacher  
Lacher & Associates  
Sandy and Steven Landes  
Sharon and Ronald Landes  
Henry Landis  
David and Carolyn Landis  
James and Nina Landis  
Joseph and Janet Landis  
The Estate of Grace H. Landis  
Landis Decorating  
Dan and Shirley Lapp  
Grace Leatherman  
Esther Leatherman  
Spencer and Patricia Lee  
Doug and Marjory Leidy  
Kathryn Lepp  
Elizabeth Levering  
Anthony and Cheryl Loftus  
Donna Longacre  
Henry and Carol Longacre  
Richard and Rose Longacre  
Francis and Mary Loughran  
Robert and Geraldine Loux  
Wayne Lynch  
Martin and Marjorie Mareno  
Phoebe Markley  
Don and Kathy Martin  
William and Patricia McNamara  
The Merck Foundation  
Alex and Bill Metricarti  
Nina Michalowski

Sonja Miller  
Theran and Marlene Mills  
Alice T. Moore  
Janice Mortimer  
Eva Moyer  
Vernon and Doris Moyer  
Elizabeth Moyer  
K. Leon and Dawn Moyer  
Moyer Indoor-Outdoor  
J. Philip and Betsy Moyer  
June Murphy  
Roy and Annie Musselman  
Joseph and Charlotte Myers  
Steven and Georgia Myers  
Bradley and Barbara Nester  
Shirlee Nicolino  
Richard and Patricia Nyce  
Lorene Nyce  
David and Karen Olson  
Donald and Romaine Pannabecker  
Allen and Tina Pannell  
Joanne Podulka  
William and Jean Press  
Providence Mennonite Church  
Eileen Prusinski  
Marian Quinn  
Rhonda Reed  
Mary Jane Reid  
Lowell Reiff  
Brian and Valerie Richards  
Rita's of Harleysville  
James and Kendra Rittenhouse  
Doug and Charlene Rogers  
Arlene Rosenberger  
The Estate of Ruth A. Rush  
Vernon and Janet Ruth  
Eleanor Ruth  
The Estate of Lois Samuelson

The Estate of Horace T. Saylor  
Nancy Schaller  
Gloria Scheip  
Erma Schnabel  
Bonnie and Dean Scott  
J. David and Kelly Shenk  
Arlin and Esther Shisler  
Kathy and James Shott  
Thomas and Loretta Slattery  
Sliwinski Floor Covering Services, Inc.  
Ronald and Susan Souder  
Wayne and Marian Steinly  
Thomas & Boyds Inc.  
Towamencin Mennonite Church  
Nancy Vicario  
Norman and Janet Vincent  
Wendell and Jolene Weaver  
Donald and Mary Weiss  
Robert and Mary Wendig  
Dorothy Wohlgemuth  
Wilmer and Margaret Zook  
Longacre Family Charitable Fund

*Gifts to the Restricted  
Gifts Fund*

Elizabeth Batton  
Gordon R. and Velda M. Beidler  
Gordon and Joan Bell  
Virginia Brower  
Clair and Arlayne Clemens  
Emily Clemens  
Douglas and Becky Clemens  
Dale and Gladys Crouthamel  
Alan and Linda Eickhoff  
Louis and Sharon Ganssle  
Harley and Anna Gehman  
Stanley and Susan Godshall  
Jeffrey and Donna Godshall  
James and Beverly Graybill  
Betty M. Hackman  
The Estate of Adele Hoiler  
Ray and Brenda Hurst  
Philip and Susan Keeler  
Harold and Gladys Knechel  
Paul Koch  
John and Dorothy Kratz  
Wilbur and Marilyn Kriebel  
William and Florence Kuhfuss  
Joseph Kuroski  
Sandy and Steven Landes  
Henry and Jane Landis  
J. Clyde and Jane Landis  
Linford and Frances Landis  
James and Nina Landis  
Jim and Millie Maust  
Paul and Esther Moyer  
Rachel Myers

Paul and Dawn Nelson  
Curtis and Gladys Nice  
Shirley Rittenhouse  
Cheryl Ruehl  
Edward Schmitt  
Marie Shisler  
Gary Sloyer  
Mary Lou Strouse  
Richard Urmey  
Fred and Rhelda Warriner  
Dorothy Wohlgemuth

*Gifts to the Dock  
Woods/Dock Meadows  
Sharing Fund*

Abdelsalam Corporation, dba  
Linli Jewelry  
Frances Alderfer  
Cindy Alderfer  
Margaret Allen  
Megan Amabile  
Arlo and Marjorie Anderson  
Lee Annis  
Dorothy Baker  
Elizabeth Batton  
Gordon and Joan Bell  
Joanne Benner  
Richard and Susan Bishop  
William and Anne Bishop  
Ethel Blumberg  
Frederick Bookheimer  
Harry and Trudy Borchers  
Christian and Lori Borglum  
Marie Boulton  
Margaret Briggs  
Karl and Margie Buchholz  
Kathryn Buckingham  
Edwin and Ethel Castor  
Evelyn Chaplin  
Clair and Arlayne Clemens  
Oda Coseo  
Nancy Cuthbertson  
J. Stanley Davis  
Margaret Dawson  
Rose Depman  
Daryl and Julie Derstine  
Beverly Derstine  
Maxine Derstine  
Todd and Christine Detweiler  
Irvin and Althea Detwiler  
Rita DiLucia  
Charlotte Dimmig  
Warren and Maralyn Dimmig  
Nancy Dodge  
Teresa Doorley  
The Estate of Richard Drissel  
Nicholas and Stephanie Duczak  
Jane Early

Shirley Eyre  
Doris Fenton  
Thomas and Elizabeth Fetter  
Ralph and Carol Folcarelli  
Teresa Frank  
Pearl Fulmer  
Walter and Anne Godley  
David and Carolyn Gordon  
Barbara Gorman  
Grace Mennonite Church  
Jane Graham  
Shirley Gregory  
Norman and Betty Hackman  
Dorothy Haggart  
Howard Heckler  
Clifford and Caroline Heizmann  
John Helms  
Nancy Hemmerle  
Edgar and Faith Hendler  
Robert and Beatrice Henning  
William and Mary Anne Hildebrand  
Joan Hinks  
E. Richard and Roberta Hittinger  
Robert and Barbara Houston  
Mark Kehs  
Winifred Keller  
Marilyn Kennedy  
Ruth Kinsey  
Elizabeth Kinzie  
Anne Kobasa  
Richard and Karen Koitzsch  
Noah and Sarah Kolb  
Willard and Constance Kriebel  
William and Donna Kriner  
William and Florence Kuhfuss  
Marjorie Kuhn  
Signe Kulp  
Frank and Ruth Kuna  
Anne Lamphere  
Spencer and Patricia Lee  
Kathryn Lepp  
Cyril and Norma Lever  
Elizabeth Levering  
Kenneth and Constance Lewis  
Jane Littman  
Francis and Mary Loughran  
James and Suzanne MacFadden  
Wilson and Patricia Marvel  
Thelma McClure  
Shirley McCoy  
Reda Meldrum  
Nina Michalowski  
F. Clifford and Patricia Mill  
Sonja Miller  
Richard and Shirley Mininger  
Kathleen M. Mitchell  
Suzanne Morgenson

Clark and Julie Moyer  
Ruth Moyer  
J. Phillip and Betsy Moyer  
Paul Moyer  
Richard and Judith Mumaugh  
Beverly Nace  
Penny Naugle  
Norman Naylor  
Shirlee Nicolino  
Michele Nolen  
North Penn United Way  
Miriam Nyce  
James and Margaret O'Reilly  
David and Karen Olson  
Over the Top Styles LLC DBA  
TaylorMarie's Apparel  
Allen and Tina Pannell  
Marcia Parker  
Jean Parks  
Adam and Judith Paterson  
Robert Pecharo  
Raymond Podulka  
Damon and Sharon Podulka  
Podulka Family Trust  
Barry and Carol Pratt  
William and Jean Press  
Eileen Prusinski  
Richard and Diane Raab  
Barbara Rafter  
Kenneth and Obie Ralphs  
Audrey Rambacher  
Alice Rau  
Leon Reese  
William and Hilde Reichert  
Mary Ann Reidy  
George and Nancy Renner  
Roy Rittenhouse  
Donald and Joan Robinson  
Charles and Joanne Rosboschil  
Dorothy Rosenberger  
Joyce Rosenberry  
Theodore and Dolores Rupley  
Mildred Rurka  
Eleanor Ruth  
Anthony Salmon  
Grace Sanson  
Jane Schaller  
Jean Schofield  
Hubert Schwartzentruber and  
Mary Rittenhouse  
John Seeton  
Harry and Ann Sharff  
Anna Sheasley  
Marie Shisler  
Clyde and Joy Shoop  
Joyce Shultz  
Ronald and Arbutus Sider  
Thomas and Loretta Slattery

Glenn and Elizabeth Slotter  
Rosalie Smith  
James and Suzanne Smith  
G. Thomas and Janet Stanley  
Dorothy Stefano  
William Stewart  
Joan Stitzinger  
Robert and Barbara Thompson  
Kenneth Truscott  
Robert and Olive Turnipseed  
Della Ulmer  
Norman and Janet Vincent  
Shirley Volker  
Dawn Walker  
The Estate of Ruth Warbrick  
Wayne Waters  
Jean Weaver  
Janet Wells  
Edith Wetherill  
Diane Wetherill  
Whimsical Elegance Boutique  
Wanda Wilcke  
Verna Wilde  
Eugenia Willits  
Dorothy Worth  
Robert and Mary Yarrington  
Sherri Yoder  
Kenneth and Faye Zeigler  
Rosemary Zelinskie

**GIFTS IF MEMORY**

*Gifts to the Souderton  
Mennonite Homes  
Agape Fund*

**Horace Alderfer**  
Linda Fithian  
**Ileana Barthelmeh**  
Craig and Marianne Dise  
**Ralph Clemens**  
Vernon and Grace Clemmer  
Aristidis and Ellen Koudis  
Lacher & Associates Employees  
James and Linda Mac Neill  
Gary and Louise Pio  
William and Kathryn Sundermeir  
Thomas and Kay Thompson  
Nancy Chavez Walt  
**Wilmer Derstine**  
Vernon and Grace Clemmer  
Julian and Dorothy Hagin  
Raymond and Janet Harrison  
Norman Keller  
Myron Slabaugh  
**Ezra Goshow**  
Keith and Betsy Heavener  
**Marie Heavener**  
N. Glenn and Alta Yoder  
**Clifford Hinkle**  
Cora Detweiler  
**Amanda Kratz**  
Russell and Kathryn Halteman  
Beverly Mackaman

Rachel Myers  
**Betty Landis**  
Sanford A. Alderfer  
**Ruth Marczuk**  
Russell and Kathryn Halteman  
Charlotte Kostrubiak  
Beverly Mackaman  
**Catherine Mason**  
Bruce and Deborah Alder  
**D. Laraine Moyer**  
Helen Keller  
Rachel Myers  
**Alton Parmer**  
Bruce and Deborah Alder  
Dortha Knipe  
Henry and Lois Musselman  
Teravita  
Loren and Eileen Parmer  
Gary and Jane Parmer  
**Paul R. Pritchett**  
Raymond and Sharon Fluck  
**Esther Rogers**  
Leslie Jane Landis  
Kenneth and Mary Belle Krewson  
Walter and Barbara Matthews  
Jeannette Pachella  
Steven and Marcia Pitzenberger

*Gifts to the Dock  
Village Youth Fund*

**George Myers**  
Ann Godshall

*Gifts to the Living  
Branches Benevolent  
Care Fund*

**Jeanne Alder**  
Bruce and Deborah Alder  
**Frances Alderfer**  
Sanford A. Alderfer  
**Jesse R. Bechtel**  
Glenn and Sharon Bechtel  
**Mary Bookheimer**  
Frederick Bookheimer  
**Crystal Bradley**  
Christian and Lori Borglum  
**Margaret Caltabiano**  
Herbert and Marianne Kaemmer  
**Brendan Coughlin**  
Christian and Lori Borlgum  
**Bruce and Mabel Dando**  
Gregory and Ellen Lacher  
**Donald Derstine**  
Lois Derstine  
**Earl and Dorothy Detweiler**  
Katie Detweiler

**Richard Drissel**  
James and Barbara Thompson  
**Katelyn Fischer**  
Bruce and Deborah Alder  
James and Barbara Thompson  
Christian and Lori Borglum  
**Nathan Fulmer**  
Pearl Fulmer  
**Lester Garner**  
Ernestine Iicken  
Michael and Vanessa Gardner



Pearl Garner

**Deborah Greenberg**  
Dorothy Greenberg

**Elaine Hasson**  
Joseph and Theresa Hasson

**Edna Haws**  
Duane and Robin Nice

**Linda Hepler**  
Lamar and Carol Hepler

**Robert Hoffman, Jr.**  
Teresa Hoffman

**Irma Kostyk**  
David and Virginia Capone  
Pamela Kania  
Sheila Byrne

**Marian Kuhns**  
Blanchard and Barbara Romaine

**Elva Levins**  
Margaret Briggs

**William McClure**  
Claude and Katherine Bevan

**Andy Nafziger**  
Ruth Nafziger

**W. Leon Nice**  
Russell and Joanne Nice

**Pauline Nice**  
Duane and Robin Nice

**Althea Quintrell**  
LaVerna Curtis

**Robert N. Rau, Sr.**  
Robert N. Rau, Jr.

**Thelma Rill**  
Dolores Provost

**Alice Rittenhouse**  
James and Barbara Thompson

**Raymond Rosenberger**  
Richard Rosenberger

**Marvin Roshong**  
Jean Roshong

**Ted Rupley**  
Dennis and Sarah Murphy  
Barbara Rupley

**Lillian Seraika**  
Dawn Bishop

**Martha Toussaint**  
James and Barbara Thompson  
Janet Wells

**Ruth Yothers**  
Bruce and Deborah Alder

*Gifts to the Restricted Gifts Fund*

**Evelyn L. Hyatt-Myers**  
Lynda Borowski

**Vera Lindsly**  
Raymond and Dawn Tortorelli

**Kenneth Walker**  
Elizabeth Annis  
Elizabeth Bloom  
Harry and Trudy Borchers  
Glenn and Verna Colliver  
J. Stanley Davis  
Walter and Anne Godley  
James and Donna Gresh  
Barbara Groff  
Norman and Betty Hackman

Anne Hallman  
Leona Hoffman  
Noah and Sarah Kolb  
James and Marie Landis  
Kenneth and Constance Lewis  
F. Clifford and Patricia Mill  
Sonja Miller  
Suzanne Morgenson  
Ruth Moyer  
Barbara Rafter  
Betty Reading  
Erickson and Kathryn Reger  
Edward Richhart  
Dorothy Rosenberger  
Eleanor Ruth  
Frances Sargent  
William Sharff  
Ronald and Arbutus Sider  
Thomas and Loretta Slattery  
Glenn and Elizabeth Slotter  
Dawn Walker  
Jean Weaver  
Eugenia Willits  
William and Susan Wilson  
John and Sally Yates

*Gifts to the Nursing Scholarship Fund*

**Charles Hallman**  
Ann Hallman

**Suzanne Kevis**  
Beacon Bridge Wealth Partners

**Lera Salmon**  
Anthony Salmon

*Gifts to the Dock Woods/Dock Meadows Sharing Fund*

**Arlene Balloge**  
Shellie Cavallaro  
D.G. Fretz  
Sandy Gehman  
Barbara Golaski  
Robert and Beatrice Henning  
Esther Josephson  
Betsy Panacio  
Dr. and Mrs. Thomas Paparella  
Jean Perry  
Doris Schroeder  
Anna Sheasley  
Shirley Taylor  
James and Barbara Thompson

**David Derstine**  
Kenneth and Anne Ehst

**Richard Drissel**  
Doris Fenton  
George and Phyllis Richardson

**William Gaasche**  
Celesta Barbone  
Sandra Campbell  
Anthony and Michele Cancelli  
Michael and Claudia Chieffo  
Mary Doscher  
Sue Gaasche  
Eric and Debra Lacovara  
Kathleen Lancia  
Susan Rizzo

**Lester Garner**  
Mrs. Lucinda Bailey and  
Mr. Fred Weingarten  
John and Kathy L. Britt  
LaVerna Curtis  
Margaret Dawson  
John Dearden

Irvin and Althea Detwiler  
Denise Fantuzzi  
Doris Fenton  
Jane Graham  
Keith and Betsy Heavener  
Joan Hinks  
Leona Hoffman  
Robert and Barbara Houston  
William and Donna Kriner  
Francis and Mary Loughran  
Alice Moore  
Miriam Nyce  
Allen and Tina Pannell  
William and Hilde Reichert  
William and Janice Richards  
Doris Schroeder  
Anna Sheasley  
Joyce Shultz  
James and Barbara Thompson  
Glenn and Barbara Thompson  
Janet Wells  
Edith Wetherill  
Ernest D. Yocum Jr.  
J. Andrew and Elizabeth A. Young  
Greene Tweed

**Richard Groff**  
Anna Sheasley

**Ruth Hague**  
Helen Deery  
Teresa Doorley  
Jane Graham  
Shirley Gregory  
John Helms  
Edgar and Faith Hendler  
Robert and Beatrice Henning  
Robert and Barbara Houston  
Gary and Barbara Ann Johnson  
Mary Lou Johnson  
Linda Johnson  
John and Carole Kriebel  
William and Donna Kriner  
William and Florence Kuhfuss  
Kathleen M. Mitchell  
Ralph and Claire Morgan  
Joseph and Eleanor Ochotny  
Charles and Michele Petrillo  
William and Jean Press  
Robert and Doris Rothenberger  
Theodore and Dolores Rupley  
John and Gabriella Sabatini  
Frances Sabatini

Anthony Salmon  
Hervey and Jean Schofield  
James and Barbara Thompson  
Gloria Zeigler  
US Army Old Guard Fife  
& Drum Corps

**Kathryn Hardy**  
John Hardy and Dawn Wilson

**Florence Helms**  
J. Alan and Leslie Seese

**Sumako “Sue” Kaneda**  
Bruce and Deborah Alder  
Frederick Bookheimer  
Mark and Tamara Cyzyk  
Irvin and Althea Detwiler  
Doris Fenton  
Paulette Grandmont  
Keith and Betsy Heavener  
Thomas and Barbara Kaneda  
Francis and Mary Loughran  
Terry and Maryann Lyons  
Phoebe Markley  
Kathleen and Charles McHugh  
Miriam Nyce  
Rodney and Marcia Omachi  
Joyce Rosenberry

Jane Schaller  
Doris Schroeder  
Rosalie Smith  
James and Barbara Thompson  
Edith Wetherill  
Ernest D. Yocum Jr.

**Suzanne Kevis**  
Ruth Haslam  
Elizabeth Levering

**Ann Kotulka**  
James and Joan Durs  
Timothy and Charlotte Fisher  
Richard and Joan Snyder

**Elva Levins**  
Jerry and Delores Steege

**Anna McClure**  
Frank Dzara

**Virginia “Jean” McClure**  
Richard and Mary Jane Bolton  
Frederick Bookheimer  
Paul and Suzanne Brooke  
James and Karen Faber  
Doris Fenton

Henry and Linda Haynes  
Keith and Betsy Heavener  
Leona Hoffman  
Phoebe Markley  
Thelma McClure  
S. Barksdale and Carol McKay  
George and Nancy Renner  
Rosalie Smith  
James and Barbara Thompson  
Ernest D. Yocum Jr.

**Mildred Montgomery**  
Doris Fenton

**Allen Moyer**  
Willard and Constance Kriebel

**George Myers**  
Doris Fenton

**Bill Parfitt**  
Doris Fenton

**Althea Quintrell**  
Lois Bennett  
Teresa Doorley  
Doris Fenton

**Edward Richhart**  
John and Sally Yates

**Thelma Rill**  
Doris Fenton  
Philip and Susanna Guglielmi

**Doris Risley**  
Helen Biehl

**Theodore Rupley**  
Doris Fenton  
Francis and Elva J. Keenan  
Richard and Judith Mumaugh  
G. Thomas and Janet Stanley

**Lera Salmon**  
Teresa Doorley  
Ralph and Carol Folcarelli  
Edith Jameson  
William and Florence Kuhfuss

**Lillian Seraika**  
Calvin Collins  
Doris Fenton  
M. Evelyn Wampole  
Kirke and Amybeth Weaver

**Lavina Shevlin**  
Sandra Daniels  
Theresa Einhaus  
Henry and Amy Einhaus



George and Susan Greenland  
George and Patricia Long  
Anne O'Shea  
Thomas and Catherine Phillips  
Joel and Grace Stango

**Betty Thomas**  
William and Anne Bishop

**Martha Toussaint**  
Francis and Mary Loughran

**D. Laraine Warner**  
George and Phyllis Richardson

**Roberta Waters**  
Wayne Waters

**Gerald Willhoft**  
J. Stanley Davis

**GIFTS IN HONOR**

*Gifts to the Souderton Mennonite Homes Agape Fund*

**Virginia Brower**  
Karen Brower

**John Volk**  
S and C Blatteis Foundation

*Gifts to the Living Branches Benevolent Care Fund*

**Harold and Jane Nase**  
Robert and Patricia Nase

**Shirley Richert**  
Arthur and Michele Richert

**John Volk**  
Sandra Crittenden

**Sheri Wright**  
Berkadia Commercial Mtg LLC

**LEGACY GIVING MEMBERS**

*Circle of Love*

**PLANNED GIFTS, INCLUDING ES-TATE GIFTS AND GIFT ANNUITIES**

Harold and Ferne Alderfer  
J. Todd and Donna Alderfer  
Donald and Grace Baker  
Gordon and Velda Beidler  
Gordon and Joan Bell  
Lois Bennett  
Russell and Rhoda Bishop

Edward and Lucy Brubaker  
Maxine Derstine  
Anna Detweiler  
Joan Focht  
Ralph and Carol Folcarelli  
Grace Frankenfield  
Lester and Pearl Garner  
Jane Graham  
Richard and Ruth Hague  
Leona Hoffman  
Suzanne Kevis  
Grace H. Landis  
Dan and Shirley Lapp  
Alice Miller  
David F. Miller  
Willis A. Miller  
Harry and Dorothy Moore  
K. Leon and Dawn F. Moyer  
Rachel M. Myers  
Audrey Rambacher  
Norman and Alice Rittenhouse  
Shirley Rittenhouse  
Dorothy Ross-Harrar  
Cheryl Ruehl  
Anthony and Lera Salmon  
Harry and Ann Sharff  
Clyde and Joy Shoop  
Margaret Woolley  
Ernest D. Yocum Jr.  
Gloria Zeigler

*Circle of Hope*

**LIFETIME CONTRIBUTIONS ABOVE \$25,000**

Anonymous  
Gordon and Velda Beidler  
Edward and Lucy Brubaker  
Clair and Arlayne Clemens  
Emily Clemens  
Kenneth and Frances Clemens  
Richard and Donna Clemens  
Kenneth and Gayle Clemmer  
Clemens Family Corporation  
Ralph and Carol Folcarelli  
Lester and Pearl Garner  
P. Scott Heckler  
Bryan and Barbara Hunsberger  
Cora Longacre  
Henry and Carol Longacre  
Longacre Family Charitable Fund  
David F. Miller  
J. Phillip and Betsy Moyer  
K. Leon and Dawn F. Moyer  
Steven and Georgia Myers  
Ruth K. Oberholtzer  
Donald and Romaine Pannabecker  
Allyn and Connie Richert

Henry and Charlotte Rosenberger  
Steven and Ruth Swartley  
Martha Toussaint  
Norman and Janet Vincent  
Robert and Mary Wendig

*Circle of Faith*  
**COMMITTED TO ANNUAL GIFTS OF \$500 OR MORE**

Bruce and Deborah Alder  
Cindy and Joel Alderfer  
Carolyn and Rodney Allebach  
Willard and Glenda Bergey  
William and Anne Bishop  
Edward and Lucy Brubaker  
Kathryn Buckingham  
Kenneth and Gayle Clemmer  
Charlotte G. Dimmig  
Nancy and Thomas Donnelly  
Ralph and Carol Folcarelli  
Jeffrey and Donna Godshall  
Ted Gody  
Keith and Betsy Heavener  
P. Scott Heckler  
Bryan and Barbara Hunsberger  
Francis and Elva J. Keenan  
Vernon and Elizabeth Kratz  
Wilbur and Marilyn Kriebel  
William and Florence Kuhfuss  
Sandy and Steven Landes  
Patricia and Spencer Lee  
Henry and Carol Longacre  
Alex and Bill Metricarti  
Steven and Georgia Myers  
Miriam H. Nyce  
Ray and Nancy Scherfel  
Bonnie and Dean Scott  
Randy and Sylvia Shelly  
J. David and Kelly Shenk  
Kathy and James Shott  
Janet and Norman Vincent  
Margaret and Wilmer Zook

**BENEVOLENT CARE PARTNERS**

*Event*

Bergey's Inc.  
Contract Pharmacy Services

*Platinum*

Univest Bank and Trust Co.

*Gold*

Alderfer Glass Company  
Everence  
Lacher & Associates

*Silver*

Bergey's Electric, Inc.  
Clarke's Landscaping & Lawn Care, Inc.  
Good Plumbing, Heating, Air Conditioning, Inc.  
John Garis Homes, Inc.  
K. Leon and Dawn F. Moyer  
Perkiomen Tours  
RLPS Architects  
SynaTek  
Thomas & Boyds, Inc.

*Bronze*

American Insurance Administrators, Inc.  
Baker Tilly Virchow Krause  
Clemens Foods Group  
Delcrest Medical Services  
John and Sheila Duerksen  
Eagles Peak Spring Water  
Encore Rehabilitation Services  
Genesis HealthCare LLC  
Harleysville Savings Bank  
H. Mininger & Son, Inc.  
KCBA Architects  
Latsha, Davis & McKenna  
Moyer Indoor/Outdoor  
Rita's of Harleysville  
Seitz, Leatherman & Kolb LLC  
Sliwinski Floor Covering Services, Inc.  
TNC Self Storage  
Weaver, Reckner & Reinhart Assoc.  
Williams-Bergey-Koffel Funeral Home, Inc.

*Donor*

CR Design  
FLIK Lifestyles  
Franconia Insurance & Financial Services  
Landis Decorating  
PATHS, LLC  
Richter Drafting & Office Supply Co., Inc.  
James and Kendra Rittenhouse







275 Dock Drive • Lansdale, PA 19446  
**ADDRESS SERVICE REQUESTED**

**Dock Meadows**  
2343 Bethlehem Pike  
Hatfield, PA 19440  
215-822-0688

**Souderton**  
**Mennonite Homes**  
207 W. Summit Street  
Souderton, PA 18964  
215-723-9881

**Dock Woods**  
275 Dock Drive  
Lansdale, PA 19446  
215-368-4438

Non-Profit  
U.S. Postage  
**PAID**  
Lansdale, Pa  
19446  
Permit No. 152

## Marketing Discovery Tours

### **SOUDERTON MENNONITE HOMES – 2:00 P.M.**

Tuesday, April 18  
Tuesday, May 2  
Thursday, May 18

### **DOCK WOODS – 2:00 P.M.**

Thursday, April 27  
Tuesday, May 9  
Wednesday, May 24



Discovery Tours are designed for first-time visitors to Souderton Mennonite Homes and Dock Woods. Each event begins with light refreshments and a brief presentation to explain the communities and help you become better acquainted with Living Branches. Then you'll take a tour of the community center and residents' homes, visiting a villa, a cottage, and an apartment. **There is no fee for this event, but registration is required.**

**TO REGISTER, VISIT [WWW.LIVINGBRANCHES.ORG/EVENTS](http://WWW.LIVINGBRANCHES.ORG/EVENTS).**

